



A Results Focused Gold-Silver-Copper Company

1Q2025

www.orestone.ca

TSXV: ORS
FSE: O2R2

FORWARD LOOKING STATEMENTS



This presentation contains certain forward-looking statements that are based on assumptions made by management based on the information currently available to us. These statements include, but are not limited to, statements about our development plans, objectives, and expectations. The forward-looking statements provided in this presentation reflect our current views with respect to future events, are not guarantees of future performance or production, involve risks and uncertainties that are difficult to predict and may be based upon assumptions as to future events that may prove to be inaccurate.

It is important to realize that many factors could cause our actual results, performance or achievements to be materially different from any future results, performance or achievements that may be expressed or implied in this presentation. These factors include, but are not limited to, levels of actual grades of ores found on Orestone properties and activities by governmental authorities.

The forward-looking statements contained in this presentation are made as of the date hereof and Orestone undertakes no obligations to update publicly or revise any forward looking statements or information, whether as a result of new information, future events or otherwise, unless so required by applicable securities laws.

Gary Nordin, P. Geo., Director of Orestone Mining Corp., is a qualified person under the NI 43-101 guidelines and has reviewed the technical content of this presentation.

INVESTMENT POINTS

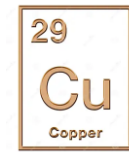
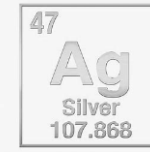
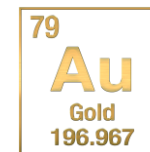
- Experienced management team with a history of success.



- High impact gold, silver and copper projects in Canada and Argentina.



- The commodity price cycle for these metals has good momentum.



- Low market capitalization >> Focused on generating shareowner wealth.



David Hottman, Chairman & CEO - 30 years experience in corporate finance and management of resource companies. A founder of Eldorado Gold (TSX, NYSE), Visionary Metals and Nevada Pacific Gold acquired by McEwen Mining in 2007.

Bruce Winfield, M.Sc., P.Geo, Director, President - 40 years of experience in the minerals industry as a geologist, corporate executive and consultant. Following 14 years with major mining companies Texasgulf Inc. and Boliden Inc., he held the position of VP Exploration for Greenstone Resources and Eldorado Gold Corporation leading to the exploration and development of five gold deposits. He has focused on exploration and development in North and South America for over 20 years as President and CEO of several junior companies.

Mark Brown, CA, CFO - Chartered Professional Accountant with 30 years of financial experience with publicly listed companies. President of Pacific Opportunity since 1997, a company providing financial management services to its clients. Mark has managed the financial departments of two TSE 300 companies and has been a founder and involved in building several junior mining companies. He is a founder of Rare Element Resources Ltd., that grew to a valuation of over \$500 million and listed on the NYSE during his tenure.

Gary Nordin, B.Sc. (Geol. Hons), Independent Director, Senior Consulting Geologist - A leading exploration geologist with a proven track record of identifying and developing important resource projects. Founding team member of Eldorado Gold (TSX, NYSE) and Bema Gold which was acquired by Kinross. Gary was also the Chief Geologist of Polaris Minerals.

James Anderson, BFA, Independent Director - 30 years of corporate and financial industry experience. Mr. Anderson had a successful 19 year career as a broker, investment banker, and manager with several Canadian investment firms. He has been instrumental in the structuring and financing of numerous companies in mineral exploration and development. James is the Chairman and CEO of Guanajuato Silver Company Ltd.

John Kanderka, B.Sc., Independent Director - 40 years of experience in the minerals and oil and gas sectors. He has been a company founder and company builder with a wide array of experience in asset purchase and sale transactions, mergers, and reorganizations. John is a director of several companies including Visionary Metal.

Julia Aspillaga - has more than 30 years of minerals industry experience in Chile and other Latin American countries. In the 1990's she was manager of Bema Gold in Chile and played a key role in the development of the 5.4 million-ounce Refugio Gold Deposit. Julia was also responsible for bringing the Cerro Casale project to the Bema Group, now in excess of 23 million ounces of gold. She also serves as an Advisor to the IMT Exploraciones Chile Fund.

Marc Blythe, P.Eng., Advisor to the Board - Marc has extensive international mining and mineral exploration experience for gold, copper, silver, nickel and zinc. He holds a Master of Business Administration degree from La Trobe University in Melbourne and a Bachelor of Mining Engineering degree from the Western Australian School of Mines. He has evaluated projects worldwide, providing advice on transactions and the associated debt and equity financing, to buyers, sellers and financial institutions. Mr. Blythe has managed mines for both Placer Dome and WMC Resources (formerly Western Mining Corporation) during his 22 year mining career. He has a strong understanding of mine feasibility and led two feasibility studies which resulted in successful operating mines - the Raleigh Mine and the Bullant Mine, both located near Kalgoorlie, Western Australia. As the Corporate Senior Mining Engineer for Placer Dome Inc. based in Vancouver he completed internal and external mine evaluations, including advising on potential acquisitions and mining technology implementation. Mr. Blythe holds a Western Australian First Class Mine Manager's Certificate of Competency and is a member of The Association of Professional Engineers and Geoscientists of British Columbia and the British Columbia and Yukon Chamber of Mines. Mark is a director of several companies including Visionary Gold.

Robert Pease, B.Sc., P.Geo, Advisor to the Board – Mr. Pease was previously the founder, CEO and a Director of Terrane Metals Corp., which owned the Mt. Milligan Project until it was acquired by Thompson Creek Metals in 2010 for \$700 million. He is also a former Director and Strategic Advisor to Richfield Ventures Corp. owner of the Blackwater Gold Deposit which was acquired by New Gold Inc. for approximately \$550 million. Previously, he was with Placer Dome for twenty-five years, most recently as General Manager, Canada Exploration and Global Major Projects.

Patrick Daniels, B.Sc. Mining Engineering, Advisor - is a senior mining engineer with 30 years of experience. Patrick has worked in multiple commodities spanning 13 countries and over 50 projects.

A HISTORY OF DISCOVERY AND DEVELOPMENT



- **Orestone's board and management team have a proven record of identifying, acquiring, developing and or producing important gold projects.**
- **Involved in one, two or all of the above activities for 14 gold and silver deposits and mines, the larger ones being:**
 - **The early modeling and drilling of the 5.4 million-ounce Refugio Gold Porphyry, Chile (past producer – Bema Gold/Kinross) ⁽¹⁾**
 - **The early modeling and drilling of the 12-million-ounce Kisladag Gold Porphyry, Turkey (in production – Eldorado Gold Corp.) ⁽²⁾**
 - **The early modeling and drilling of the Cerro Casale Gold-Copper Porphyry in Chile where a mineral reserve and resource in excess of 23 million ounces of gold has now been drilled off. (Barrick Gold and Newmont Goldcorp. are 50/50 partners on the project) ⁽³⁾**
 - **Involved in founding Bema Gold, Eldorado Gold, Polaris Minerals and Nevada Pacific Gold.**

(1) source: Kinross Gold 2006 Mineral Reserve and Resource Statement

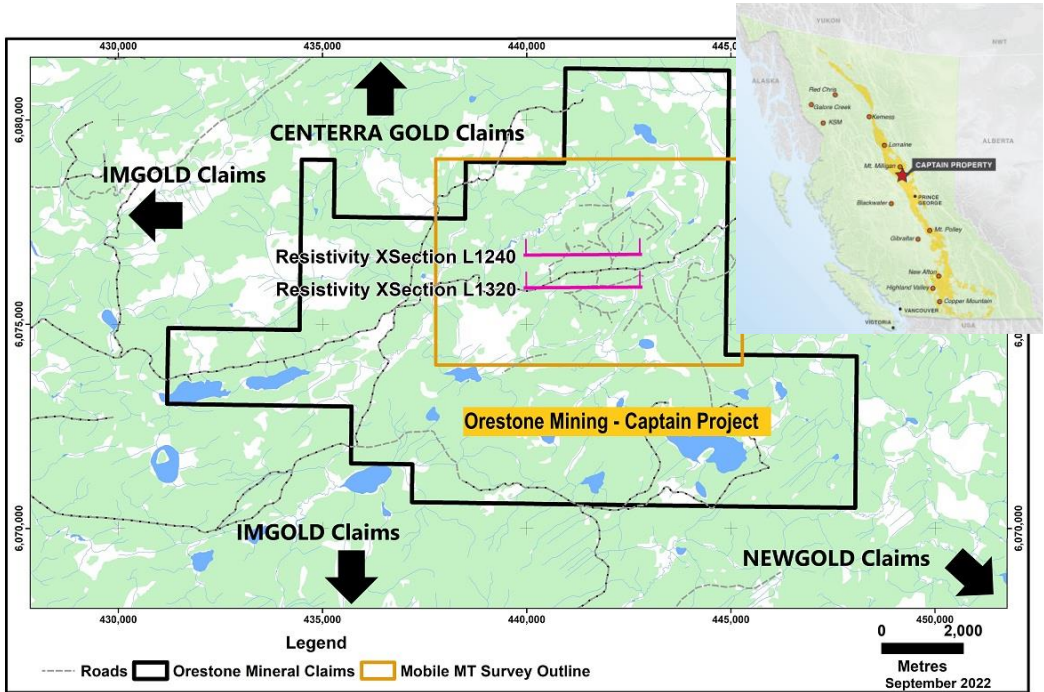
(2) source: Eldorado Gold Annual Report 2011

(3) source Goldcorp News release June 9, 2017

CAPTAIN PROPERTY - BRITISH COLUMBIA



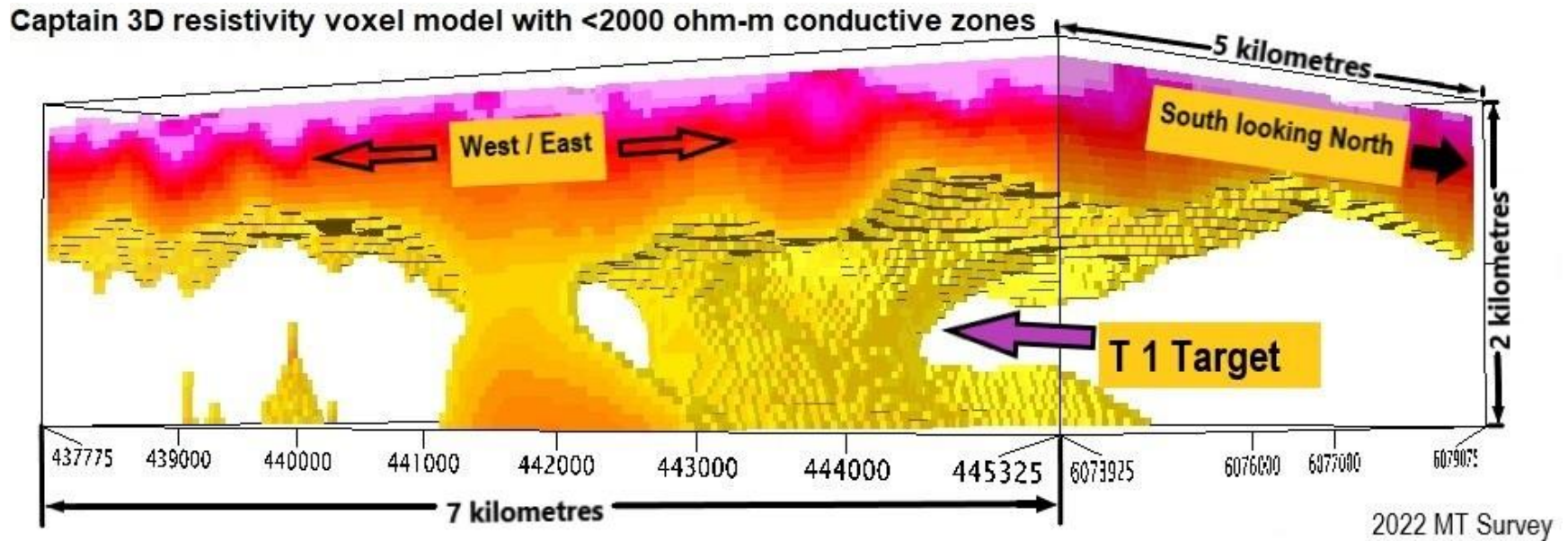
- The Captain property hosts a large gold dominate porphyry and is our primary growth driving target.
- To define the T1 target Orestone has completed IP, Mag and airborne MagnetoTelluric (EM) AirMT geophysical surveys and 8,000 metres of core drilling in 24 holes.
- The 100% owned* 71 sq km property is located 40 kilometres north of Fort St. James in central BC. The project features: relatively flat terrain; moderate tree cover; an extensive network of logging and Forest Service Roads; and is suitable for exploration year around.
- 61 drill locations that are permitted.



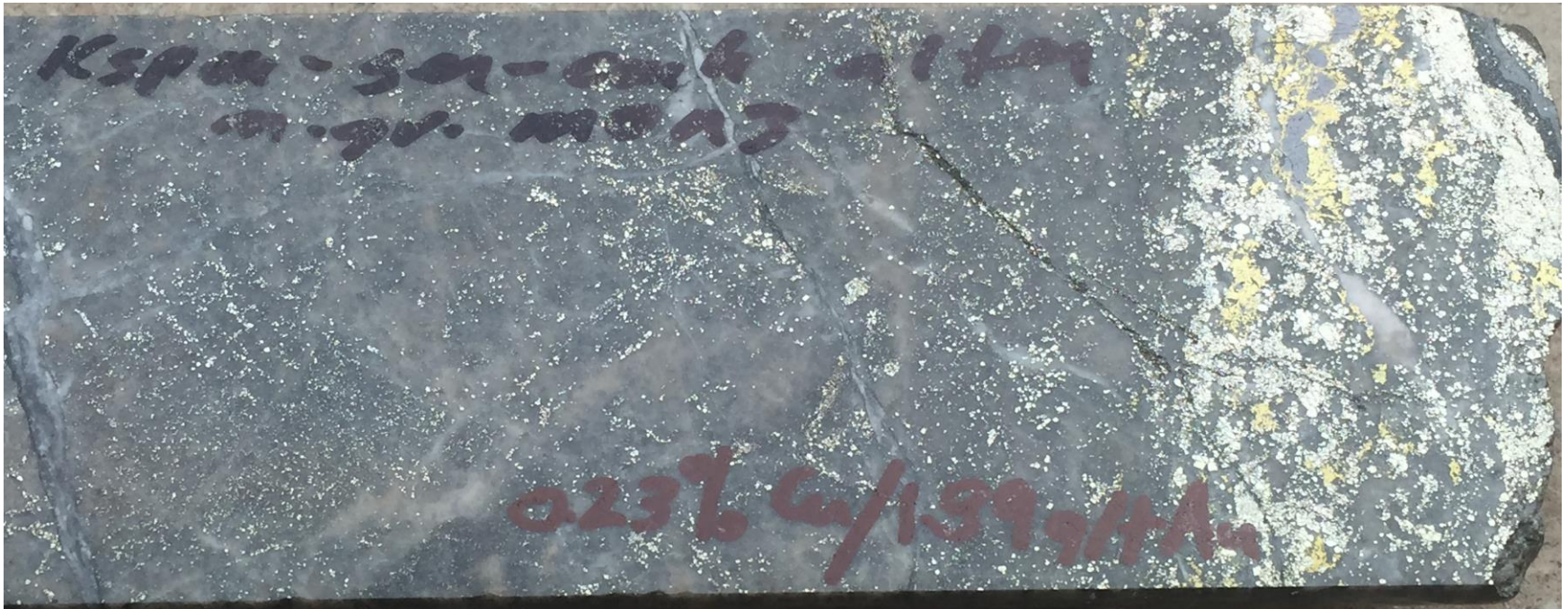
*26% of the property is subject to a 1% NSR on gold only

3D RESISTIVITY MODEL – MT SURVEY

- An airborne magnetotellurics (AirMT) survey was completed over a 35 sq. km area.
- This 3D model shows the scale and prominence of the conductivity:resistivity target.



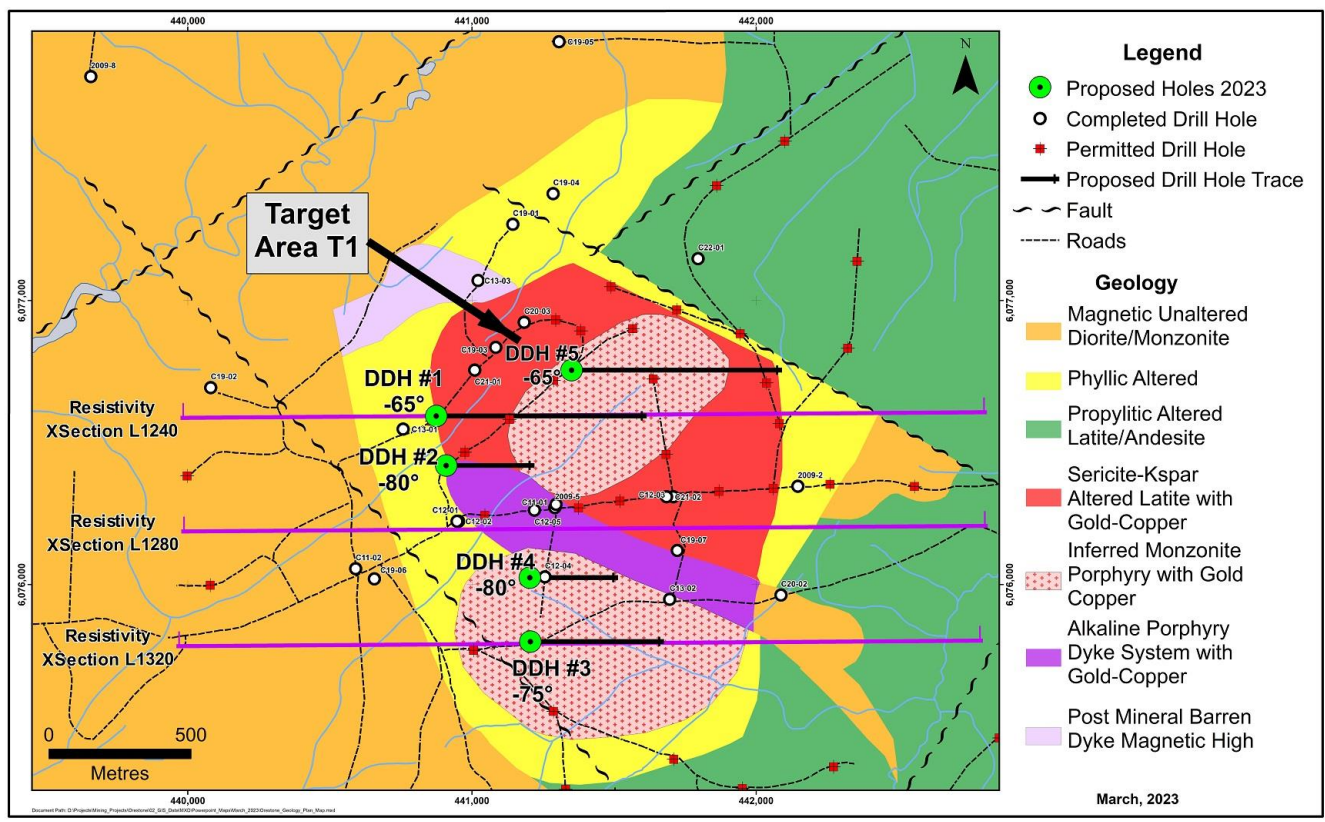
- A three metre xenolith of porphyry grading 1.89 g/t gold, 11 g/t silver and 0.23% copper was intersected in hole C13-03 within a barren post mineral dyke; note strong sericite-potassic feldspar (kspar) alteration.
- The xenolith is believed to have been carried up from the primary porphyry at depth as a fragment and we are focused on finding a large deposit of this rock type.



CAPTAIN - A LARGE GOLD TARGET TAKING SHAPE



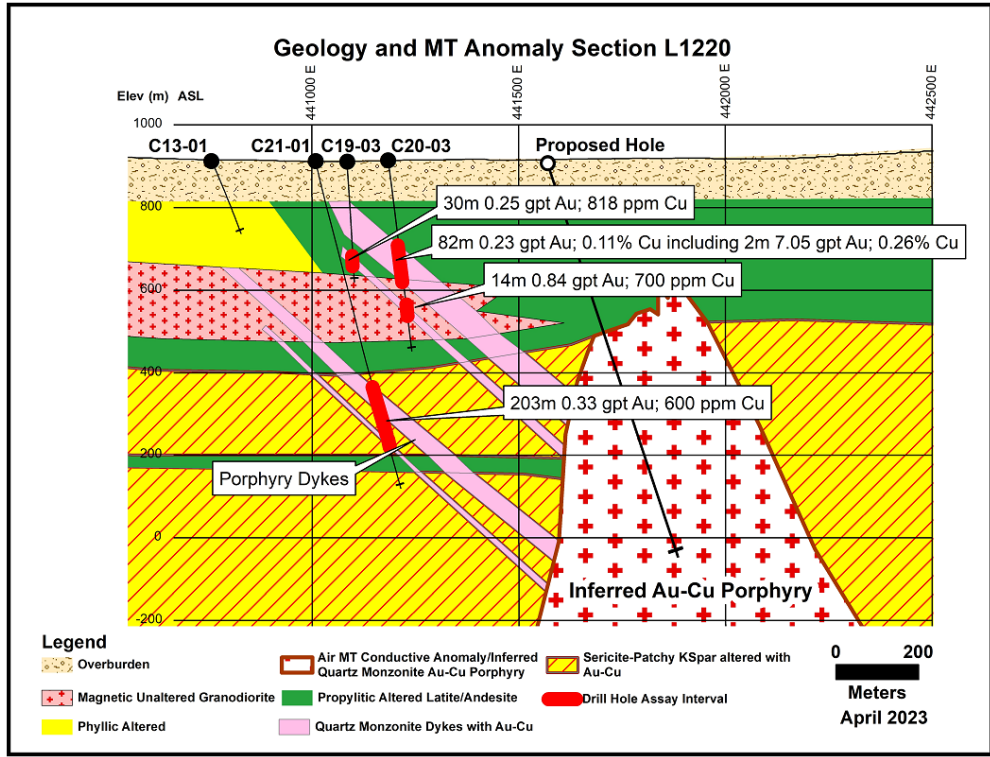
- The T1 target lies within a phyllic alteration halo, established by drilling, that covers an area of four square kilometres with co-incident strong induced polarization (IP) chargeability highs and magnetic lows.
- Drill holes have intersected porphyry style mineralization on three sides of the T1 target.



MINERALIZED DYKES HELP VECTOR TO TARGET



- On section line L1220 four porphyry dykes are mapped from 4 to 82 metres thick grading from 0.28 to 0.84 g/t gold and 540-1700 ppm copper. The dykes dip at 45 degrees and lie in close proximity to the outlined MT conductor/porphyry anomaly.
- Intersecting these dykes increases the probability of discovering the primary deposit.
- The next phase of exploration is to drill 2 or 3 - 1000 metre holes into the core of the T1 target; budget \$700k - \$1M.



FRANCISCA PROPERTY OPTION – FEBRUARY 2025

- **Salta Ranked #1 for Investment Attractiveness in Latin America in 2023 (Fraser Institute).**
- **Javier Milei the President of Argentina is moving the Country to a more pro-business and free enterprise footing.**
- **Salta is a region of good infrastructure where numerous large-scale copper, gold and lithium projects are being developed.**
- **The Francisca property, located about 80 km NW of Salta City has been Optioned on favorable terms.**
- **The property has moderate terrain, limited vegetation and good road access for exploration year-round.**



FRANCISCA PROPERTY - OPTION AGREEMENT



- **Orestone can earn up to an eighty five percent (85%) interest over seven years by making the following cash payments and exploration expenditures:**

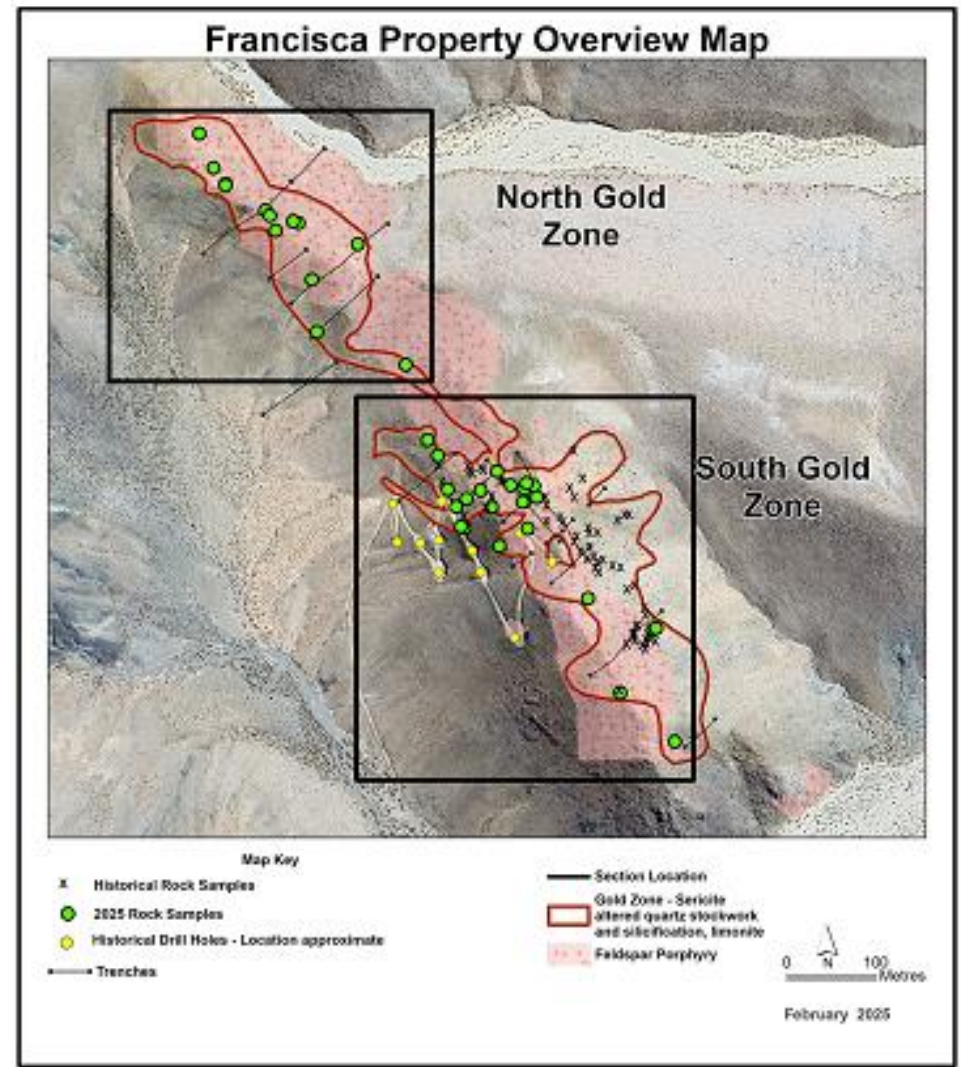
Time Period	Date for Completion	Cash Payment	Expenditures	Task
15 days	Due Diligence	US\$20,000	Nil	Complete
6 months	August 4, 2025	US\$20,000	Nil	
1 st Anniversary	February 4, 2026	US\$40,000	US\$100,000	
2 nd Anniversary	February 4, 2027	US\$40,000	US\$150,000	
3 rd Anniversary	February 4, 2028	US\$90,000	US\$250,000	
4 th Anniversary	February 4, 2029	US\$150,000	US\$500,000	
5 th Anniversary	February 4, 2030	US\$840,000	US\$1,000,000	
7 th Anniversary	February 4, 2032	US\$1,000,000		
TOTAL		US\$2,200,000	US\$2,000,000	

- **After reaching certain milestones Orestone and the vendors will form a jointly owned company after which, if any individual shareholder's interest is diluted to 5%, its interest will be converted to a one percent 1% net smelter return royalty (the NSR"). Orestone will have the right to purchase 50% of any NSR granted (0.50%) for a sum of US\$1,000,000 within five years from the granting of the corresponding NSR.**

FRANCISCA PROPERTY - TARGET OVERVIEW



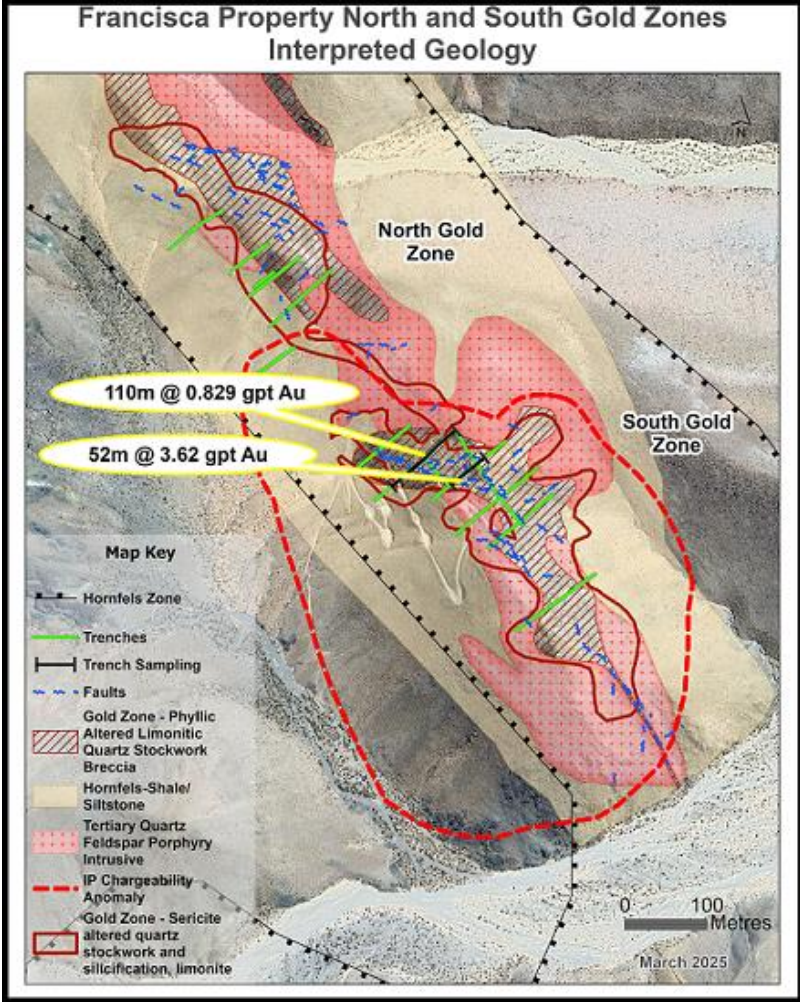
- Orestone is targeting an oxide gold deposit:
 - mineable by open pit methods and
 - amenable to low cost heap leach gold recovery.
- **Gold/silver mineralization outcrops on the crest of a moderate relief hill for 1100 metres along strike.**
- **Two gold zones identified to date; each zone has a surface expression of 400 to 450 metres in strike length and 50-100 metre width.**



FRANCISCA PROPERTY - PREVIOUS EXPLORATION



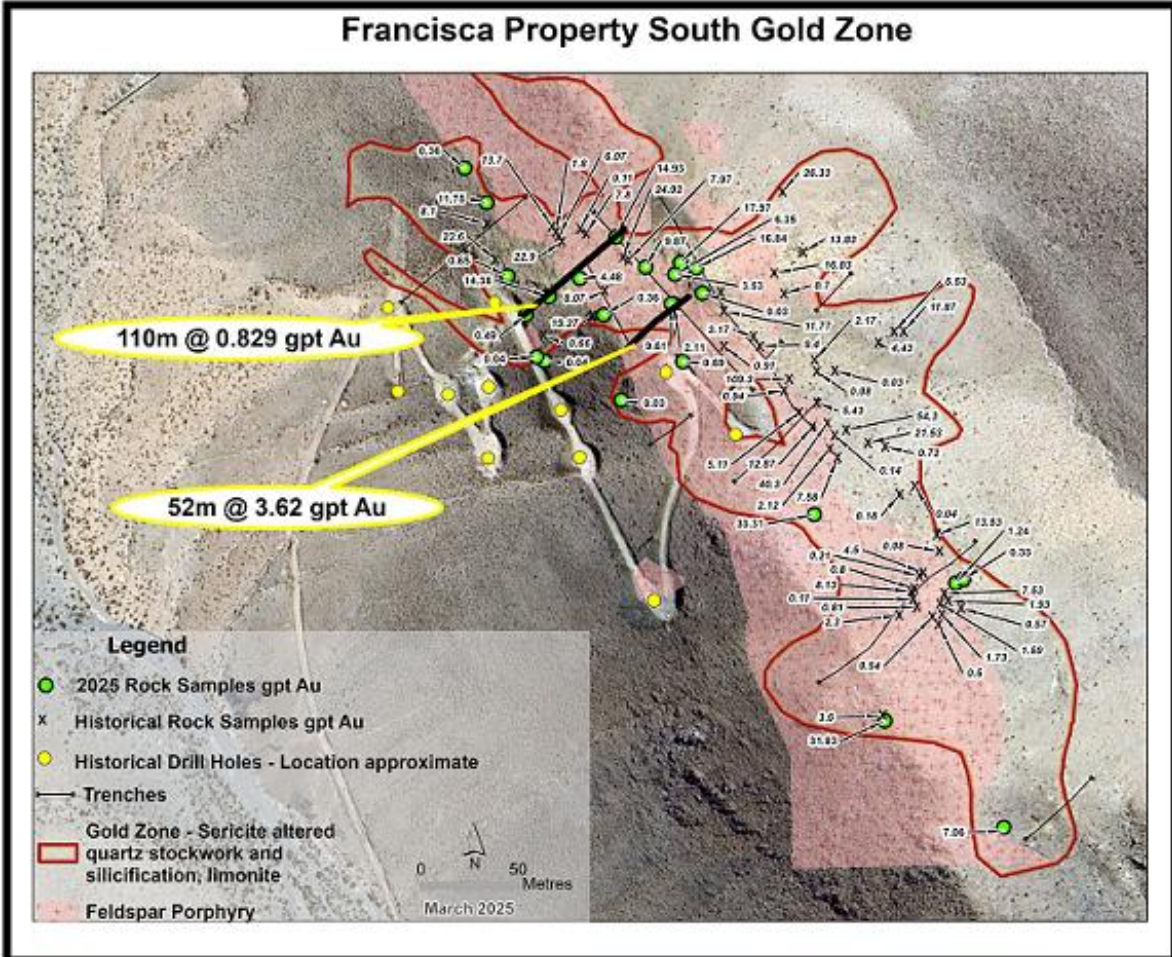
- Previous exploration between 1996-1999 and in 2006 included mapping, sampling, trenching, IP geophysics, and limited shallow core drilling.
- Eighteen trenches initially outlined the zones at 50 to 100 metre spacings, 11 trenches show significant gold and silver values, such as;
 - TZ1 - 52m of 3.65 g/t gold and 17.88 g/t silver*
 - TZ2 - 110m of 0.82 g/t gold and 7.33 g/t silver*



FRANCISCA PROPERTY - SOUTH GOLD ZONE



- The South Gold Zone is characterized by oxide gold quartz limonite stock-work and breccias where high-grade intervals are hosted within a broad zone of lower grade material.
- Previous diamond or “core” drilling was focused on high grade showings and was poorly oriented at a northerly strike, which would not have adequately tested the larger oxide gold zone.
- In strongly fractured and oxidized gold zones such as Francisca, significant gold is contained in iron oxide disseminations and fracture coatings (limonite - jarosite) which are lost in core drilling due to “washing of the core”.



FRANCISCA PROPERTY - THE LARGER TARGET

- The gold mineralized trend is surrounded by a 500 to 1000 metre wide area of strongly hornfels altered sediments.
- Higher grade intervals of gold noted in historic summary reports and maps over widths of 3 to 14 metres have grades from 1 up to 109 g/t gold*.
- A large IP changeability anomaly indicates that a potentially mineralized intrusive body lies at depth, which could have been responsible for the widespread surface gold mineralization.

Photo:

South Gold Zone crackle breccia altered sediments in contact with underlying intrusive. Heavy limonite-hemitite with fine quartz veinlets.



FRANCISCA PROPERTY - THE OPPORTUNITY



- **Francisca is a robust gold system discovered during a period of historically very low gold prices with no meaningful work conducted for almost 20 years.**
- **Orestone's goal is to define a bulk tonnage oxide gold deposit that can be mined by open pit and is amenable to low cost heap leach gold recovery methods.**
- **Phase I exploration will include detailed mapping and sampling - including trench re-sampling at a cost of US\$70 - \$100,000.**



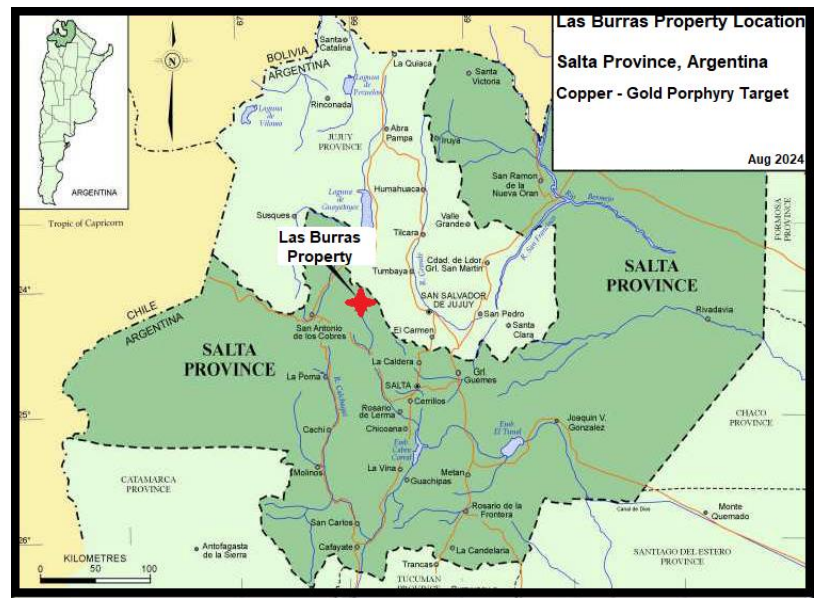
Photo:

**South Gold Zone
silicified outcrop.**

LAS BURRAS / INCAHUASI PORPHYRY TARGETS



- Orestone can earn up to a 75% in the 56.8 sq. km of concessions on very favorable terms.
- Located in Salta Province with good access and in close proximity to a highway, rail and power.



- Located north of the El Toro lineament that controls mineralization at:
 - the giant Escondida Copper Mine 320 kilometres to the west, and
 - the Taca Taca Copper Gold Molybdenum Deposit of First Quantum Minerals 200 Kms west.
- The property hosts two large porphyry systems of which exploration at the Las Burras target is the most advanced.

LAS BURRAS - PREVIOUS EXPLORATION

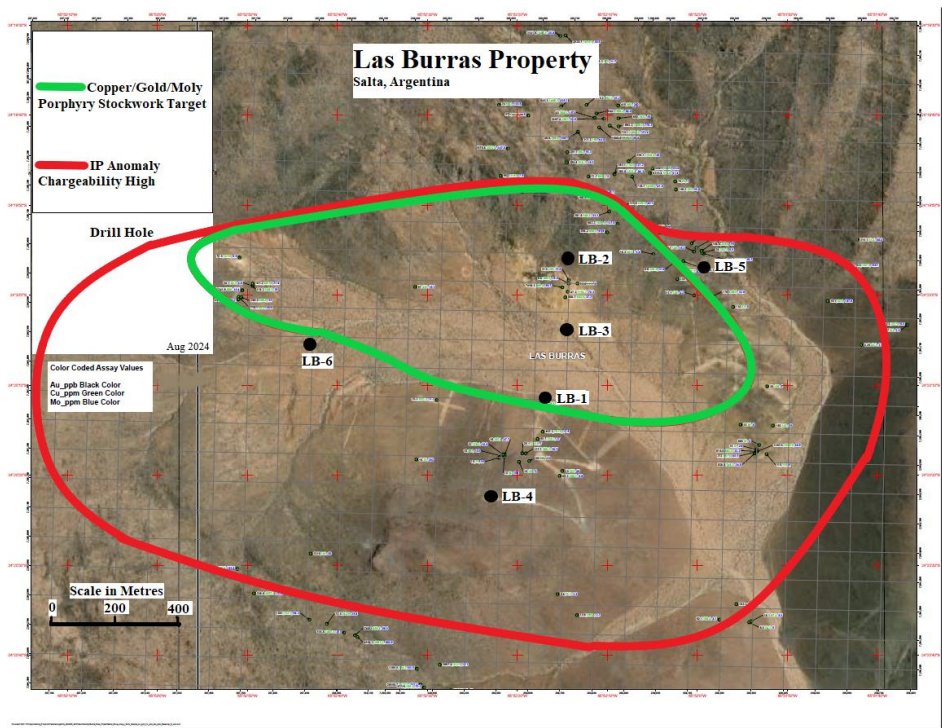
- Previous exploration included mapping, sampling, geophysics (IP and Mag), and 1,665 metres of core drilling in six holes.
- Defined a 3,000 by 1,500 metre IP anomaly (high chargeability/low resistivity).
- Coincident magnetic low indicating hydrothermal magnetic destructive alteration.
- Wide spaced drilling (250 metre centers) on the eastern end of a mapped 1000 x 800 metre zone of monzodiorite intrusive intersected widespread copper-gold mineralization.

Hole ID	Interval	Interval	Interval	Copper	Moly	Gold
	From	To	(m)	(%)	(%)	(g/t)
	(m)	(m)				
LB11-01	3	302	299	0.174	0.006	0.042
LB11-02	3.5	301	297.5	0.083	0.004	0.026
incl.	139	301	162	0.129	0.006	0.033
LB11-03	36	292	256	0.23	0.018	0.06
incl.	48	168	120	0.406	0.021	0.093

LAS BURRAS - INCAHUASI FUTURE EXPLORATION



- The target is a large trend measuring 1500-2000 metres x 400-750 metres where there has been limited to no drilling.
- To advance the copper-gold-molybdenum targets Orestone plans to complete:
 - an Airborne Magnetotelluric (MT) survey over the Las Burras porphyry system to more clearly define priority drill targets at a cost of ~US\$126,000.



LAS BURRAS - OPTION AGREEMENT TERMS



- **Option Agreement executed August 30, 2024 to earn 51% over three years**
 - **US\$2 million investment as follows:**
 - **Cash payments of US\$100,000:**
 - (i) US\$25,000 down; PAID
 - (ii) US\$25,000 on or before the first anniversary;
 - (iii) US\$25,000 on or before the second anniversary;
 - (iv) US\$25,000 on or before the third anniversary.
 - **Cumulative Expenditures of US\$1,900,000:**
 - (i) US\$100,000 on or before the first anniversary;
 - (ii) US\$500,000 on or before the second anniversary;
 - (iii) US\$1,300,000 on or before the third anniversary.
 - **Second option to earn an additional 24%:**
 - **Expenditures of US\$3,000,000 over a two year period.**
 - **If a JV Interest falls to 10% it is converted to an NSR of either 0.25% or 1% depending on gross value of gold and silver.**

INVESTMENT SUMMARY AND CAPITAL STRUCTURE



In summary, Orestone's property portfolio includes exposure to gold, silver and copper located in Canada and Argentina. Orestone's near term objective on the Francisca gold-silver property is to define an oxide gold deposit mineable by open pit methods. The Company's primary asset is the 100 percent owned Captain gold-copper project in North Central BC which hosts a large gold dominate porphyry system; permitted and drill ready. All projects are road accessible and suitable for exploration year-round. With gold and copper on the move Orestone represents a robust opportunity to create shareowner wealth through successful exploration.

Shares Issued & Outstanding	61,660,232
Warrants	0
Options	2,765,000
Fully Diluted Shares	64,425,232

Website: www.orestone.ca

Email: info@orestone.ca

February 2025

TSX.V:ORS